

**WORKING TOGETHER TO MAKE
THE LINCOLN TRAIL REGION A
DESTINATION FOR EMPLOYMENT
AND ECONOMIC GROWTH.**



The Lincoln Trail Workforce Development Board (LTWDB) consists of 23 businesses and community leaders across Central Kentucky promoting a thriving, responsive workforce system supporting business success, growth and job creation. The LTWDB provides oversight of the career centers, youth services and employment and training activities funded by the Workforce Investment and Opportunity Act.



BUSINESS SOLUTIONS TEAM

Our Business Solutions Team is made up of a variety of workforce agencies, providing you with a single point of contact for today's most relevant and useful workforce development resources.

REGIONAL BUSINESS SOLUTIONS TEAM LEAD

Shanika Johnson
solutions@workforceinit.com
270-300-2360

CAREER CENTER LOCATIONS

BARDSTOWN

860 W. Stephen Foster Avenue
Bardstown, KY 40004

ELIZABETHTOWN

233 Ring Road, Suite 100
Elizabethtown, KY 42701

LEBANON

516 Workshop Lane
Lebanon, KY 40033

LEITCHFIELD

125 E. White Oak Street
Leitchfield, KY 42754

FORT KNOX

Graham Hall Annex, Bldg 1379
Department of Veteran Affairs
26 Pershing Drive
Fort Knox, KY 40121



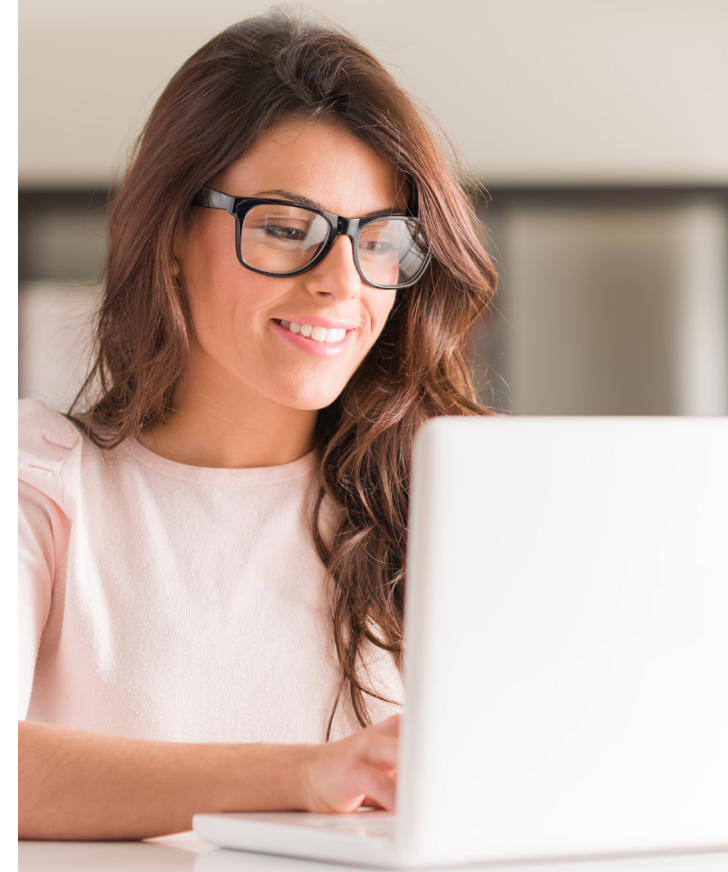
ltcareercenter.org


**Kentucky
Career Center**
Lincoln Trail

A proud partner of the [americanjobcenter](http://americanjobcenter.org) network

The Lincoln Trail Workforce Development Board assures compliance with the Education and Labor Cabinet's Methods of Administration, as amended, Nondiscrimination and Equal Opportunity Assurance and all other Nondiscrimination and Equal Opportunity requirements of WIOA.


**Kentucky
Career Center**
Lincoln Trail



**BUSINESS
SOLUTIONS**

**THE DEDICATED MEMBERS OF
OUR BUSINESS SOLUTIONS
TEAM ARE READY TO GIVE
EMPLOYERS OF ALL SIZES AND
INDUSTRIES PERSONALIZED
SUPPORT TO BUILD A
COMPETITIVE WORKFORCE.**

RECRUITING AND SCREENING SERVICES

ADVERTISE JOB OPENINGS

Promote employment opportunities throughout the one-stop system.

APPLICANT SCREENING

We screen job applicants based on your company's skill requirements.

RECRUITING

Promote job openings in-person and/or online. Reach specific populations such as veterans and individuals with disabilities. Leverage work experience internships and co-ops.

JOB FAIRS

Meet multiple qualified candidates at one time both in-person and virtually. We host online jobs fairs two times a month. Our virtual job fair platform is also available on a case-by-case basis for companies that have a need for a large number of employees across several business sectors.



EMPLOYEE DEVELOPMENT AND RETENTION SERVICES

TRAINING

Training is available for your current employees and potential candidates. Not only does training build required skills, but it also helps recruit applicants and improve retention. Funds are available for qualified candidates.

- Employee Training
- Apprenticeship
- On-the-job Training (OJT)
- Incumbent Worker Training (IWT)

WORKSHOPS

Onsite or off, on topics relevant to your employees such as GED training, How to do Your Taxes, How to Manage Your Finances, etc.

RE-EMPLOYMENT SERVICES/ OUTPLACEMENT ASSISTANCE

For businesses that are downsizing due to economic factors or other circumstances.

SUPPORT NEW EMPLOYEE SUCCESS

Success coaching and supportive services for new employees to increase retention rates.



BUSINESS INFORMATION, CONSULTATIVE AND PLANNING SERVICES

LABOR MARKET INFORMATION (LMI) RESEARCH

Localized labor market information such as wage studies and demographics is available upon request.

CONSULTATIVE SERVICES

Information and resources to enhance business performance (i.e. business plans, tax incentives, tax credits and assistance, etc.).

EQUIPMENT AND FACILITIES

Space to conduct training, including computer labs and office equipment (e.g., fax, copy machine).

NETWORKING OPPORTUNITIES

Connect with other employers and businesses to learn about community resources to help grow your business.

*Program is funded with Workforce Innovation and Opportunity Act
Title I funds through the Kentucky Education and Labor Cabinet
and the Lincoln Trail Workforce Development Board.*