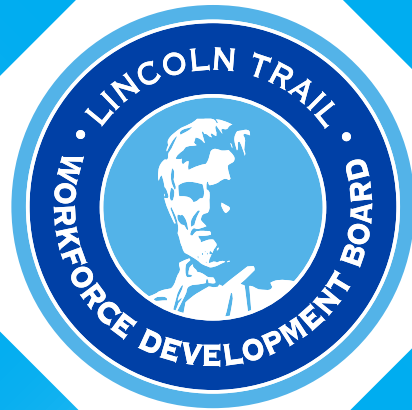


FIFTH  ANNUAL  
STATE OF THE  
WORKFORCE  
**SUMMIT**

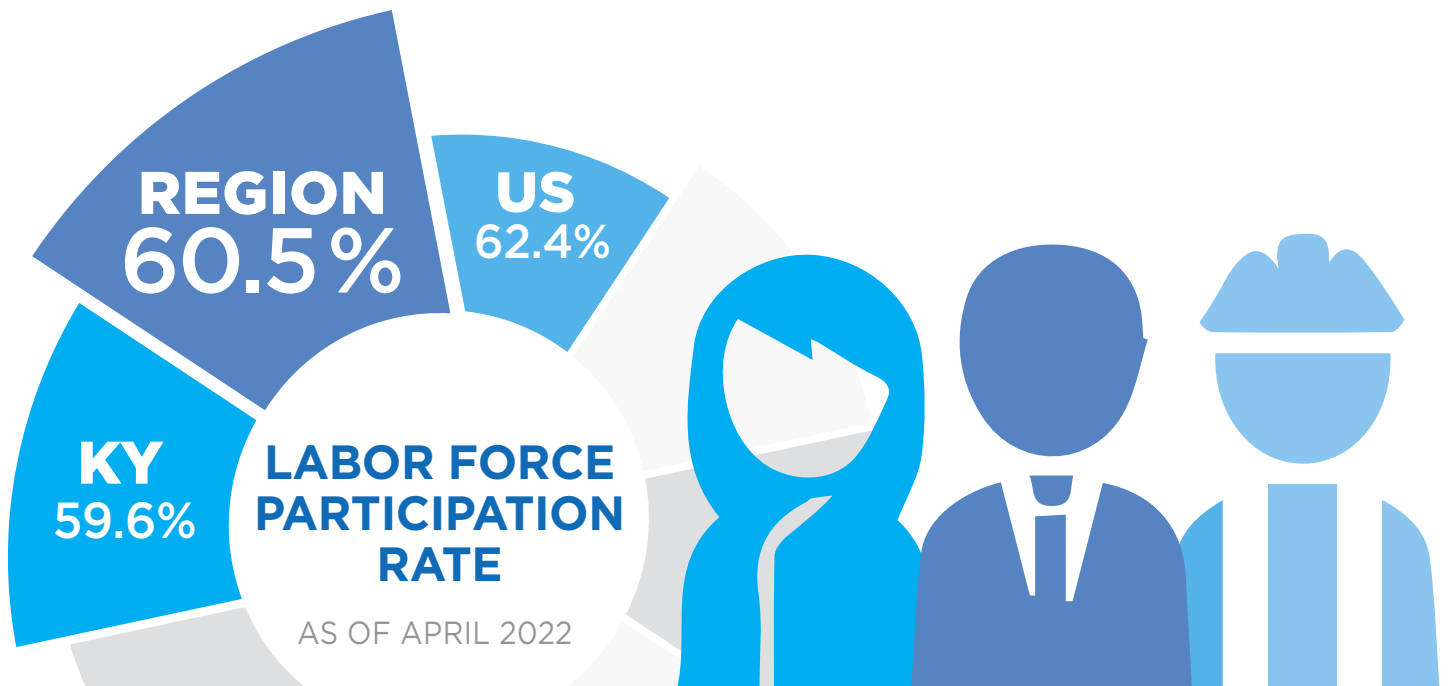
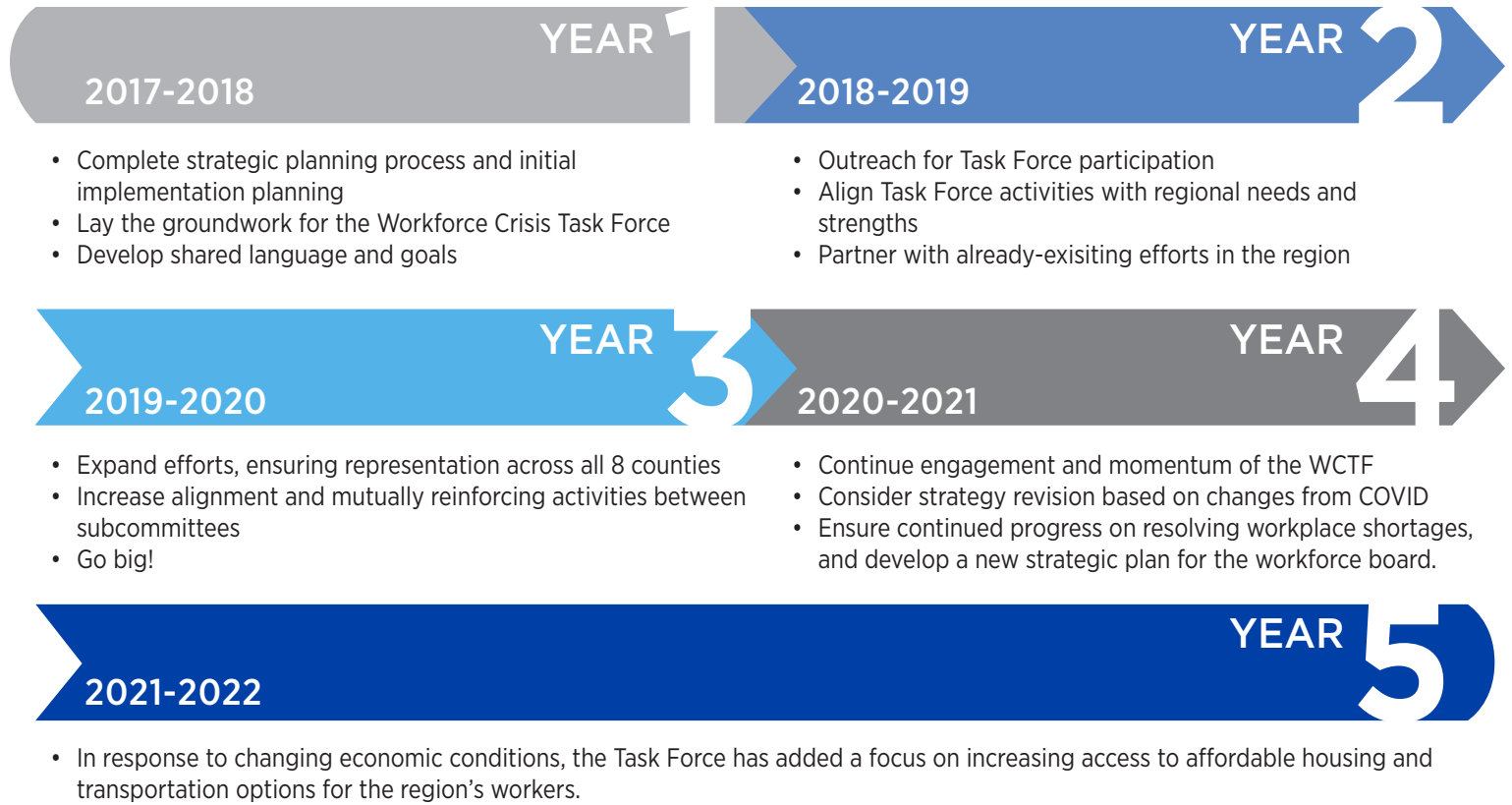
20  
22



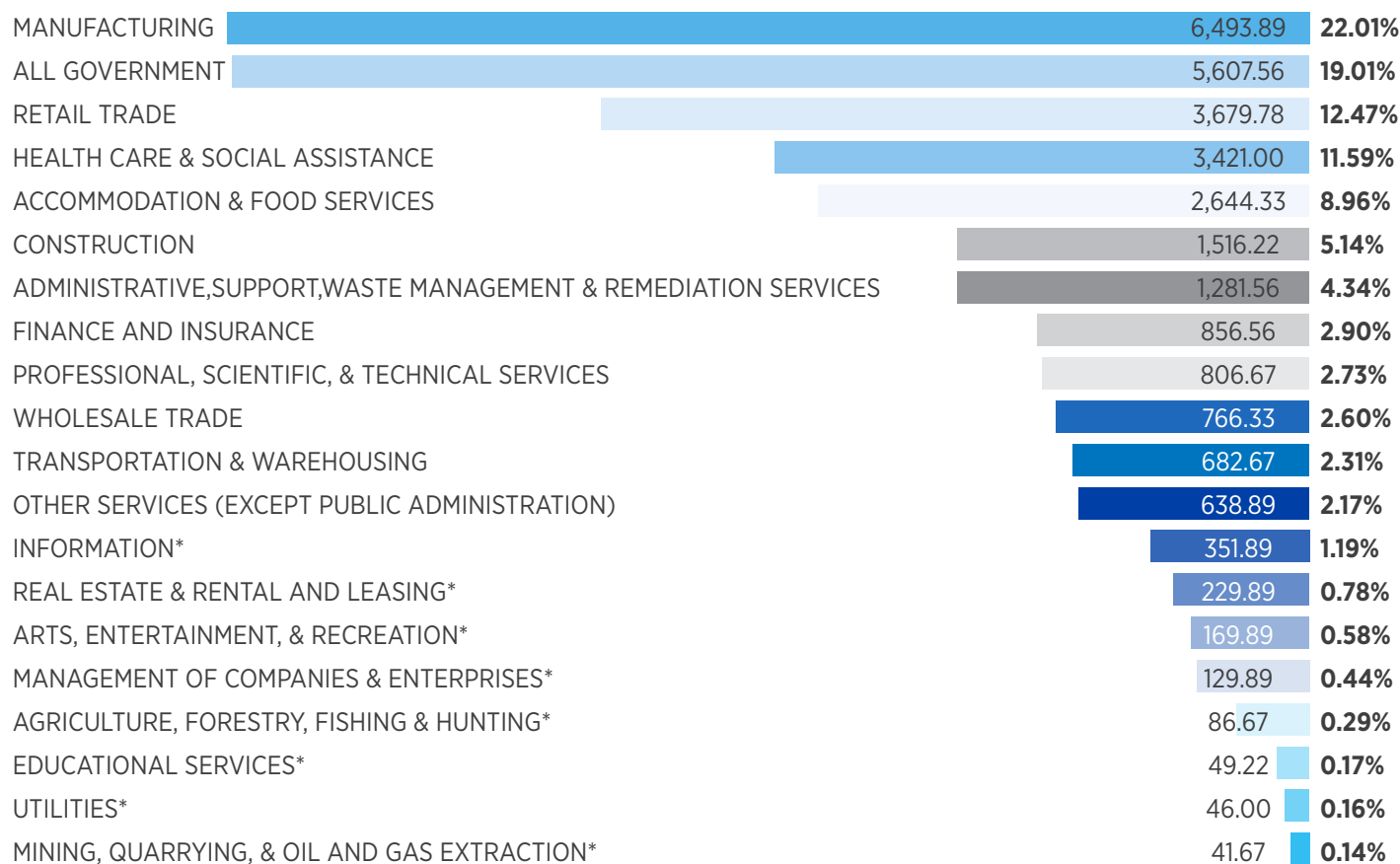
The Workforce Crisis Task Force was convened five years ago as part of the implementation of the Lincoln Trail Workforce Development Board's strategic plan. That plan was developed to respond to the extreme shortage of workers for our regional employers.

# STRATEGIC PLAN IMPLEMENTATION

## Overview of the workforce crisis task force



# JOB NUMBERS



## ALL INDUSTRIES = 29,505 JOBS

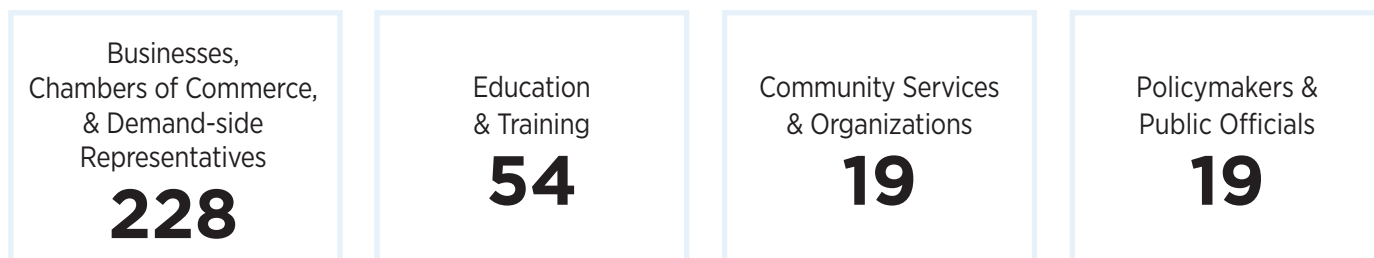
### AVERAGE MONTHLY EMPLOYMENT, LINCOLN TRAIL EMPLOYMENT DATA BY INDUSTRY, Q1-Q3 2021

\* Indicates missing data from some counties in some quarters

# NEWS FROM THE TASK FORCE

The Task Force was convened as the implementation body for the Lincoln Trail Workforce Development Board's 2017 strategic plan and remains active and engaged with activities in the updated strategic plan for 2022-25.

### TASKFORCE ENGAGEMENT BY CATEGORY (number of members from each sector)



If you are already on the Task Force mailing list, you will automatically get an update on the plan and the implications for the committees. If you're not, please join today by visiting [ltcareercenter.org/taskforce](http://ltcareercenter.org/taskforce).

# JOIN US

## THE WORKFORCE CRISIS TASK FORCE IS A COMMITTEE OF THE LINCOLN TRAIL WORKFORCE DEVELOPMENT BOARD. ITS LEADERSHIP INCLUDES THE FOLLOWING:

**DANIEL CARNEY** Member

**DONIELLE LOVELL** Co-Chair, Expungement Focus Area (formerly called the Removing Obstacles Subcommittee)

**JIM RACHLIN** Task Force Co-Chair

**JULIA SPRINGSTEEN** Co-Chair, Expungement Focus Area (formerly called the Removing Obstacles Subcommittee)

**JUSTON PATE** Member

**LANCE BLANFORD** Task Force Co-Chair

**SHERRY WHITMAN-POWERS** Member

## THE LINCOLN TRAIL WORKFORCE DEVELOPMENT BOARD MEMBERS:

**Joseph Ashley**, Orbis Corporation

**Alan Biddle**, International Brotherhood of Boilermakers (IBB) Local 40

**Lance Blanford**, Wee Care Family Services, Partners in Pediatric Therapy

**Julie Brown**, IHG Consulting, LLC

**Daniel Carney**, Springfield-Washington County Economic Development Agency

**Jennifer Carman**, Career Development Office

**Stan Carton**, NELCO, Inc.

**Christopher Cottrell**, Ray's Ford Chrysler

**Myra Covault**, Baptist Health Hardin

**Jerry Paul Dubree**, Commonwealth Machining

**Michael Embry**, International Union of Operating Engineers, Local 181

**Joe Fowler**, United Way of Central Kentucky

**Patricia Krausman**, University of Kentucky, Small Business Development Center

**Jenny Lampton**, Office of Vocational Rehabilitation

**Scott Lusk**, The Lusk Group

**Summer Morgan**, KY Adult Basic Education

**Mark Nelson**, Sun Tan City, Planet Fitness, Topp't Pizza

**Trish Niles**, Mid-Park, Inc.

**Dr. Juston Pate**, Elizabethtown Community and Technical College

**Jim Rachlin**, Rachlin Enterprises, Inc.

**Tom Renfrow**, Central KY Realtors

**Sarah Smith**, Central KY Tool

**Davette Swiney**, Central Kentucky Community Foundation



## CONTACT

**Sherry Johnson**

Lincoln Trail Area Development District  
270-769-2393 | [sherry@ltadd.org](mailto:sherry@ltadd.org)