

THE STATE OF THE WORKFORCE

20 21



The Workforce Crisis Task Force was convened four years ago as part of the implementation of the Lincoln Trail Workforce Development Board's strategic plan. That plan was developed to respond to the extreme shortage of workers for our regional employers.

STRATEGIC PLAN IMPLEMENTATION

OVERVIEW OF THE WORKFORCE CRISIS TASK FORCE

YEAR 1

2017-2018

- Complete strategic planning process and initial implementation planning
- Lay the groundwork for the Workforce Crisis Task Force
- Develop shared language and goals

YEAR 2

2018-2019

- Outreach for Task Force participation
- Align Task Force activities with regional needs and strengths
- Partner with already-existing efforts in the region

YEAR 3

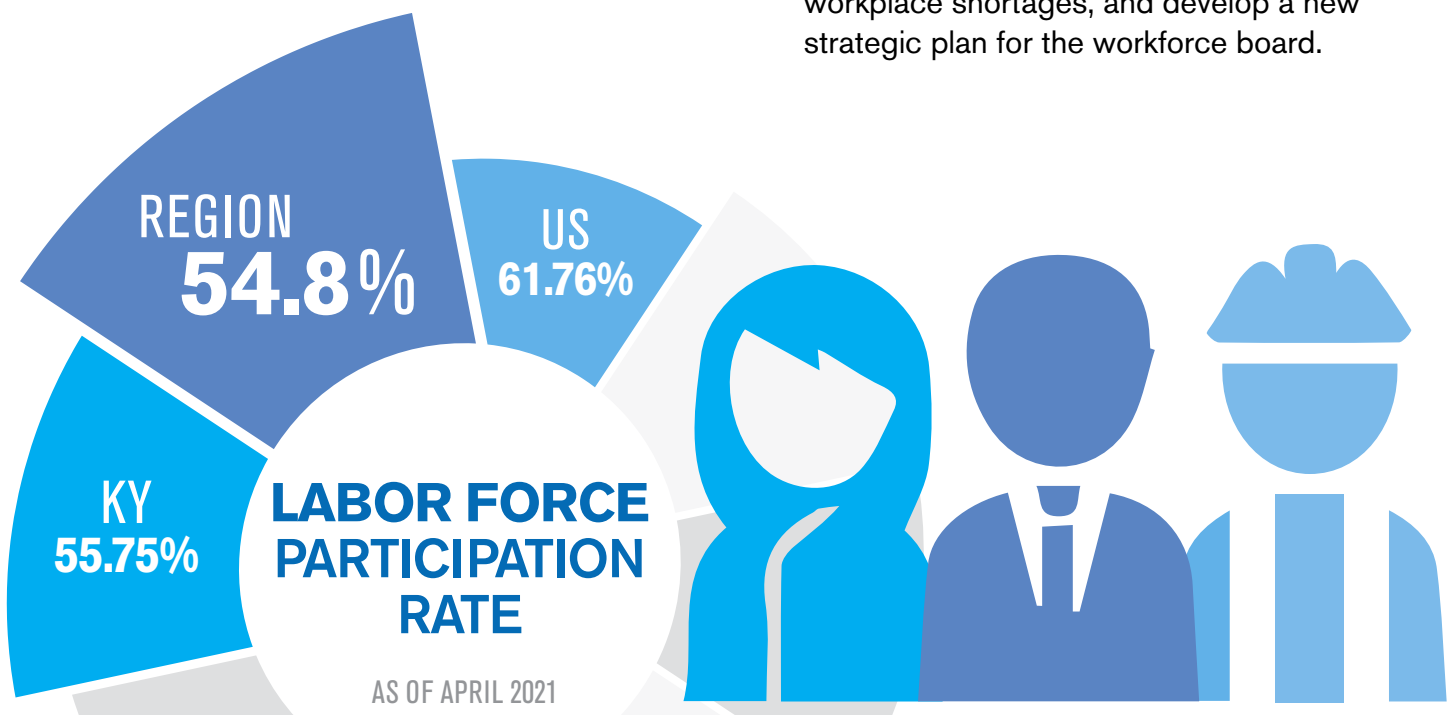
2019-2020

- Expand efforts, ensuring representation across all 8 counties
- Increase alignment and mutually reinforcing activities between subcommittees
- Go big!

YEAR 4

2020-2021

- Continue engagement and momentum of the WCTF
- Consider strategy revision based on changes from COVID
- Ensure continued progress on resolving workplace shortages, and develop a new strategic plan for the workforce board.



JOB NUMBERS

GOVERNMENT	20,567	21.6%
MANUFACTURING	20,497	21.5%
RETAIL TRADE	11,320	11.9%
HEALTH CARE & SOCIAL ASSISTANCE	9,091	9.5%
ACCOMMODATION & FOOD SERVICES	8,685	9.1%
ADMINISTRATIVE AND SUPPORT AND WASTE MANAGEMENT & REMEDIATION SERVICES	4,382	4.4%
CONSTRUCTION	4,239	4.4%
FINANCE AND INSURANCE	2,584	2.7%
OTHER SERVICES (EXCEPT PUBLIC ADMINISTRATION)	2,441	2.6%
WHOLESALE TRADE	2,264	2.4%
PROFESSIONAL, SCIENTIFIC, AND TECHNICAL SERVICES	2,143	2.2%

ALL INDUSTRIES = 95,390 JOBS

¹ Data from KY Stats Labor Market Information Report Library: Employment and Wages by Industry report - the latest available data is from 2019

NEWS FROM THE TASK FORCE

The Task Force was convened as the implementation body for the Lincoln Trail Workforce Development Board's (LTWDB) 2017 strategic plan. The Task Force remains active on activities related to that plan and is awaiting the publication of the updated LTWDB strategic plan for 2022-25 to reconvene or reconstitute committees.

TASKFORCE ENGAGEMENT BY CATEGORY

(NUMBER OF MEMBERS FROM EACH SECTOR)



If you are already on the Task Force mailing list, you will automatically get an update on the plan and the implications for the committees. If you're not, please join today by visiting lccareercenter.org/taskforce.

JOIN US

THE WORKFORCE CRISIS TASK FORCE IS A COMMITTEE OF THE LINCOLN TRAIL WORKFORCE DEVELOPMENT BOARD. ITS LEADERSHIP INCLUDES THE FOLLOWING:

Jim Rachlin, Task Force Chair

Jon Ballard, Co-Chair, Unlocking Local Potential Subcommittee

Daniel Carney, Co-Chair, Business Engagement Subcommittee

Donielle Lovell, Co-Chair, Removing Obstacles Subcommittee

Juston Pate, Co-Chair, Unlocking Local Potential Subcommittee

Julia Springfield, Co-Chair, Removing Obstacles Subcommittee

Sherry Whitman-Powers, Co-Chair, Business Engagement Subcommittee

THE LINCOLN TRAIL WORKFORCE DEVELOPMENT BOARD MEMBERS:

Joseph Ashley, Orbis Corporation

Lance Blanford, Wee Care Family Services

Julie Brown, IHG Consulting, LLC

Daniel Carney, Springfield-Washington County Economic Development Agency

Jennifer Carman, Office of Career Development

Stan Carton, NELCO, Inc.

Christopher Cottrell, Ray's Ford Chrysler

Myra Covault, Baptist Health Hardin

Michael Embry, IBB Local 40

Joe Fowler, United Way of Central Kentucky

Greg Gribbins, Marion County Chamber of Commerce

Patricia Krausman, University of Kentucky, Small Business Development Center

Jenny Lampton, Office of Vocational Rehabilitation

Anna Larson, KY Skills U, KY Education & Workforce Development Cabinet

Scott Lusk, The Lusk Group

Mark Nelson, Sun Tan City, Planet Fitness, Topp't Pizza

Trish Niles, Mid-Park, Inc.

Dr. Juston Pate, Elizabethtown Community and Technical College

Jim Rachlin, Rachlin Enterprises, Inc.

Tom Renfrow, Central KY Realtors

Kenneth Ritchie, Jr., IBB Local 40

Rep. Dean Schamore, Dean Schamore, Inc., dba Digital Connections Plus

Megan Stith, Elizabethtown Community and Technical College

Davette Swiney, Central Kentucky Community Foundation



CONTACT

Sherry Johnson

Lincoln Trail Area Development District
270-769-2393 | sherry@ltadd.org